

# HAWTHORNE ARTIST COOP: A Place To Live + Make

Avis Wheeler, Fran Di Caprio, Luigi Little, Minchie Lae Pavico, Nasier Ellis, Stephen Farrell

## PROJECT OVERVIEW

*Initiative:* Empowering residents of North Minneapolis through design that provides safe, affordable, and sustainable space to live and make.

*Location:* 3014 - 3024 Emerson Ave N. Minneapolis, MN, 55411

## PROJECT GOALS

The Hawthorne Artist Coop is a collection of nine residences arranged around a central maker-space available to all members of the cooperative. We envision a project that creates space where artists of North Minneapolis can live together while engaging in their craft. By providing housing that is accessible and affordable to artists, and develops over time, we hope to promote financial and physical empowerment, increase ownership in the community, and build creative skills.

The design prioritizes sustainable self-sufficiency

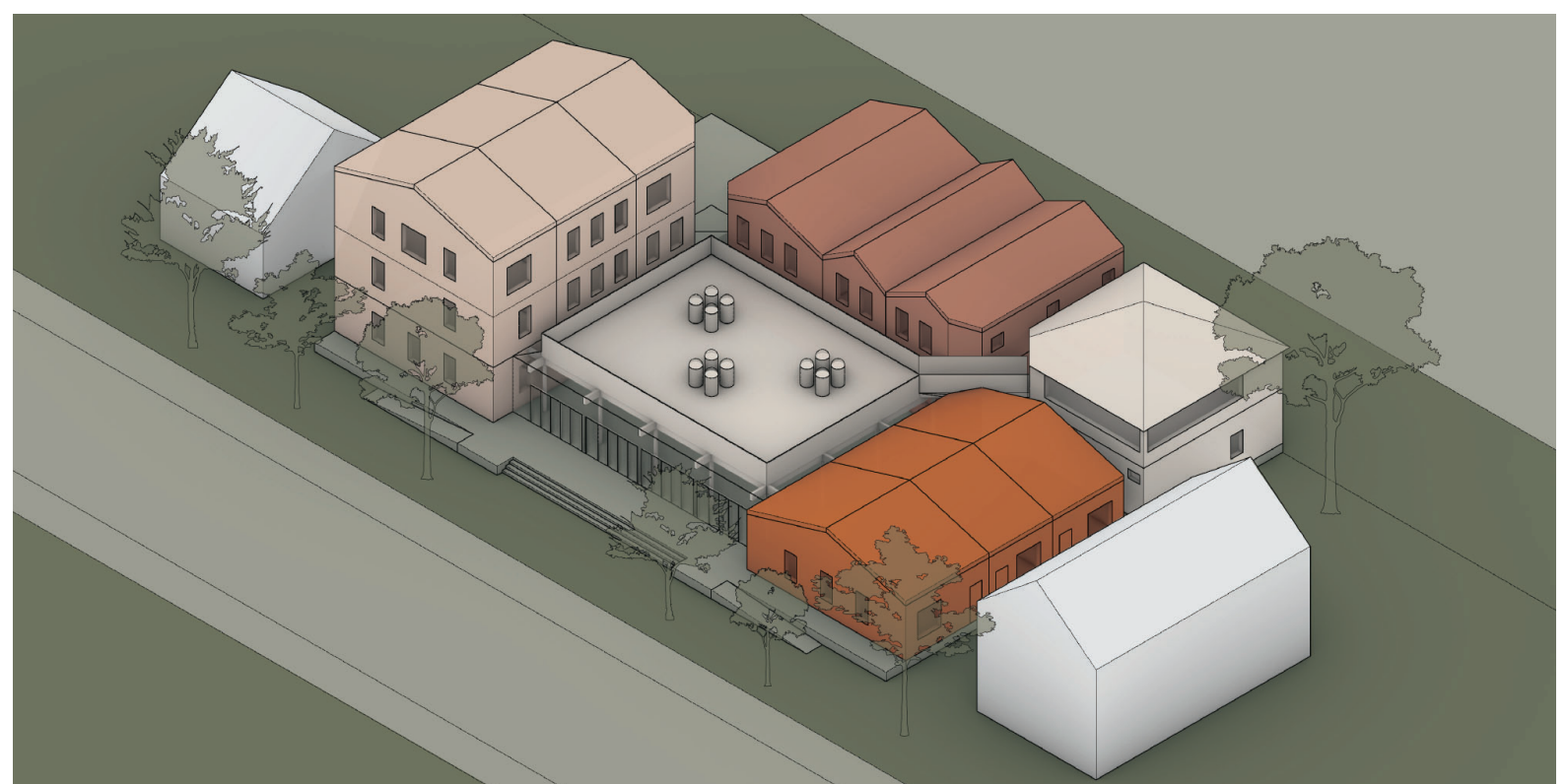
through the integration of solar energy, organics recycling, and food production, thus decreasing the monthly financial burden of home ownership. The interface between communal work space, private studios, and private residences at the heart of the project provides opportunities for collaboration, decreases isolation, and strengthens connections within the community. Finally, we envision a process that is also affordable to develop; the building design and financial model both allow for phasing which will minimize the initial hurdle of development.



BUILDING SITE + NEIGHBORHOOD CONTEXT



ORGANIZATION OF SHARED WORK + LIVE SPACES



COMMUNAL MAKE + LIVE COMPLEX



EXISTING STREET CONDITIONS