

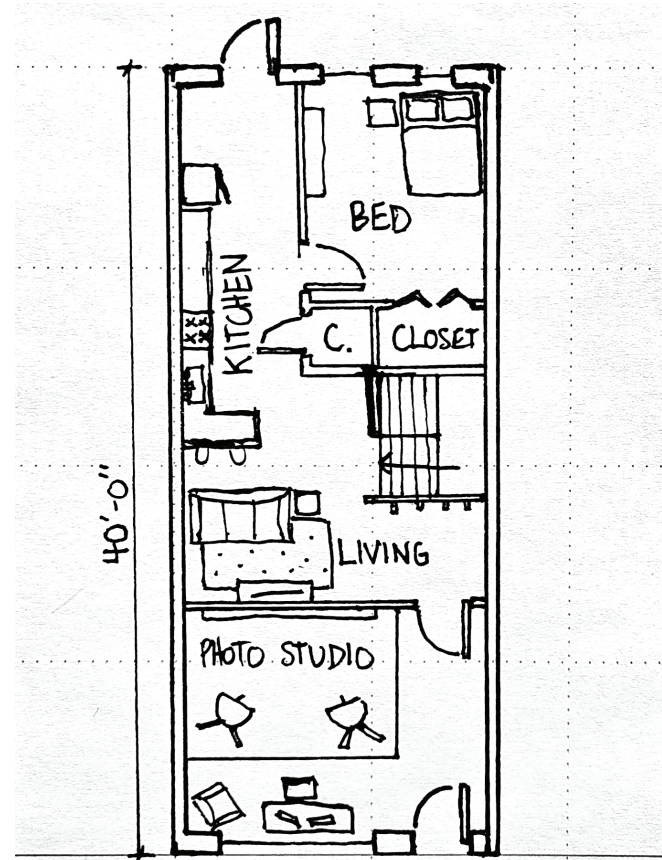
HAWTHORNE ARTIST COOP: Sample Housing Types

Avis Wheeler, Fran Di Caprio, Luigi Little, Minchie Lae Pavico, Nasier Ellis, Stephen Farrell

UNIT TYPES

UNIT A:

The occupants of the one-story house could be a diligent student, a budding young artist or professional, newlyweds embracing their fresh start, or a resilient single parent. The space is meant to be flexible for transient creatives.



FLEXIBLE LAYOUT



COMBINATION PHOTO STUDIO + LIVING

UNIT B:

Six young musicians met online and have been making music together for the past year. They are looking to kickstart an independent music career by moving to Minneapolis and living together. Dense living quarters meet their needs of affordability, and facilitates the creation of tight bonds among the band. The majority of the ground floor studio space is devoted to a recording studio and music production suite.



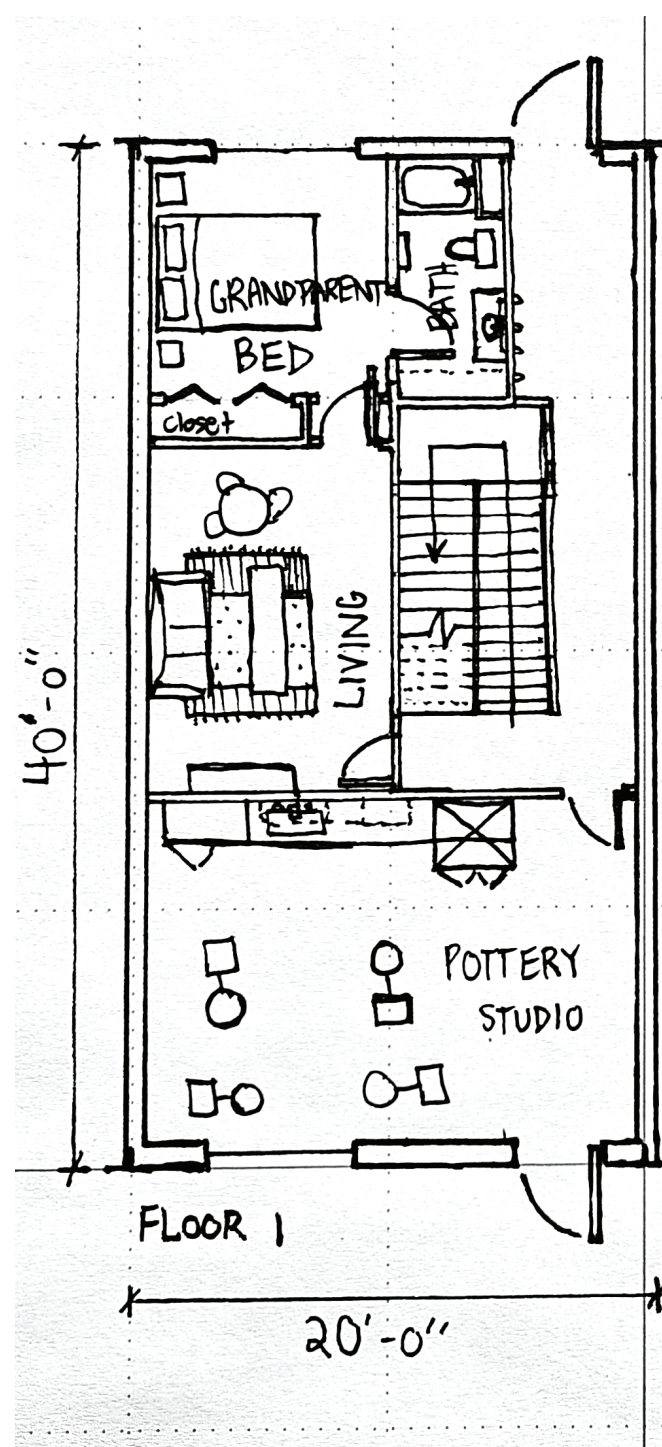
RECORDING STUDIO



RECORDING + PRODUCING MAKER SPACE

UNIT C:

This multigenerational family is seeking a home to fit all of their needs. Franklyn and Kristal met while studying pottery and now run their own pottery studio out of the artist's co-op. While they pursue their passion, they also want space for their young children to learn and play. Additionally, Kristal's parents have moved to the city to be closer to their grandkids.



WORK + LIVE PLAN



POTTERY STUDIO + ADJACENT LIVING