

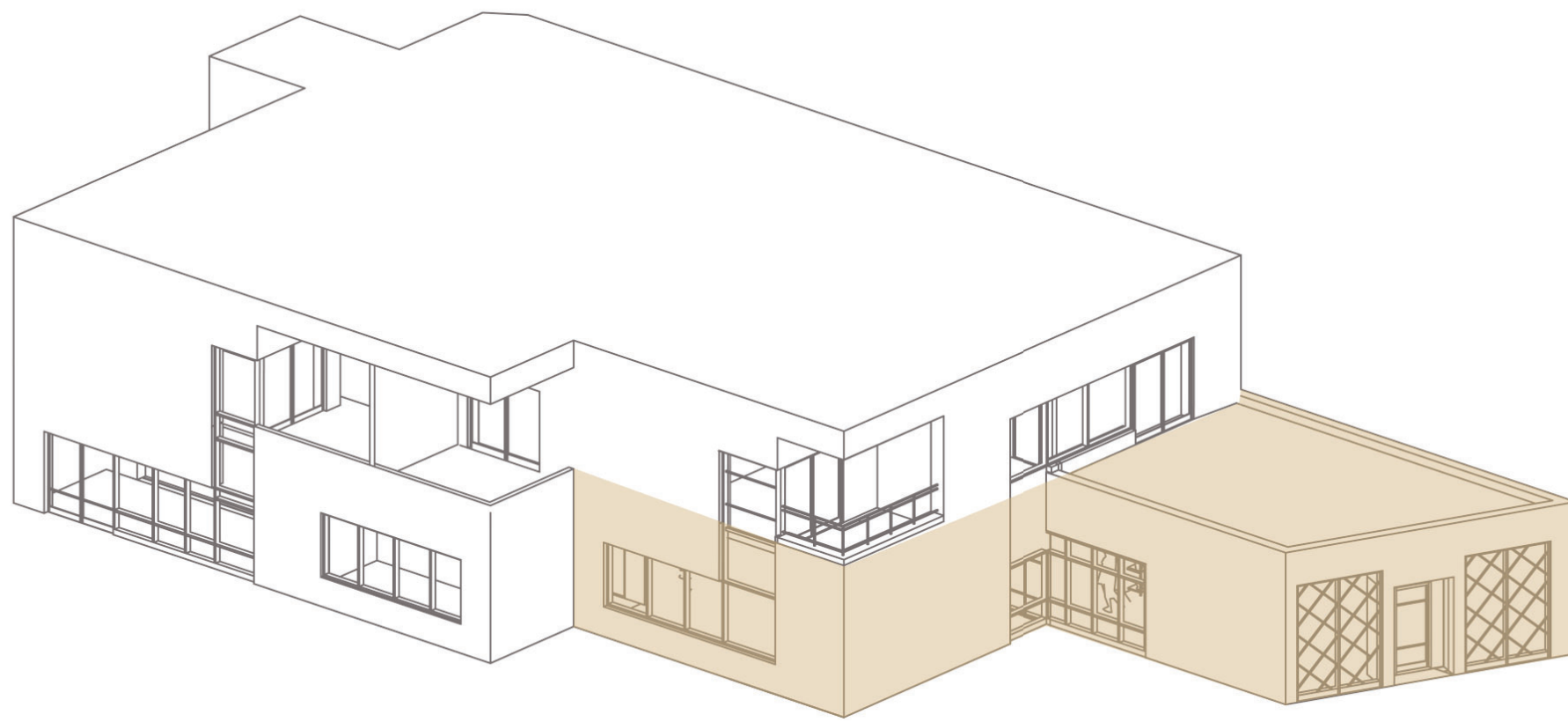
COOPERATIVE LIVING: Workshop + Retail

Jonathan Ross, Ra'Shad Bowen-King

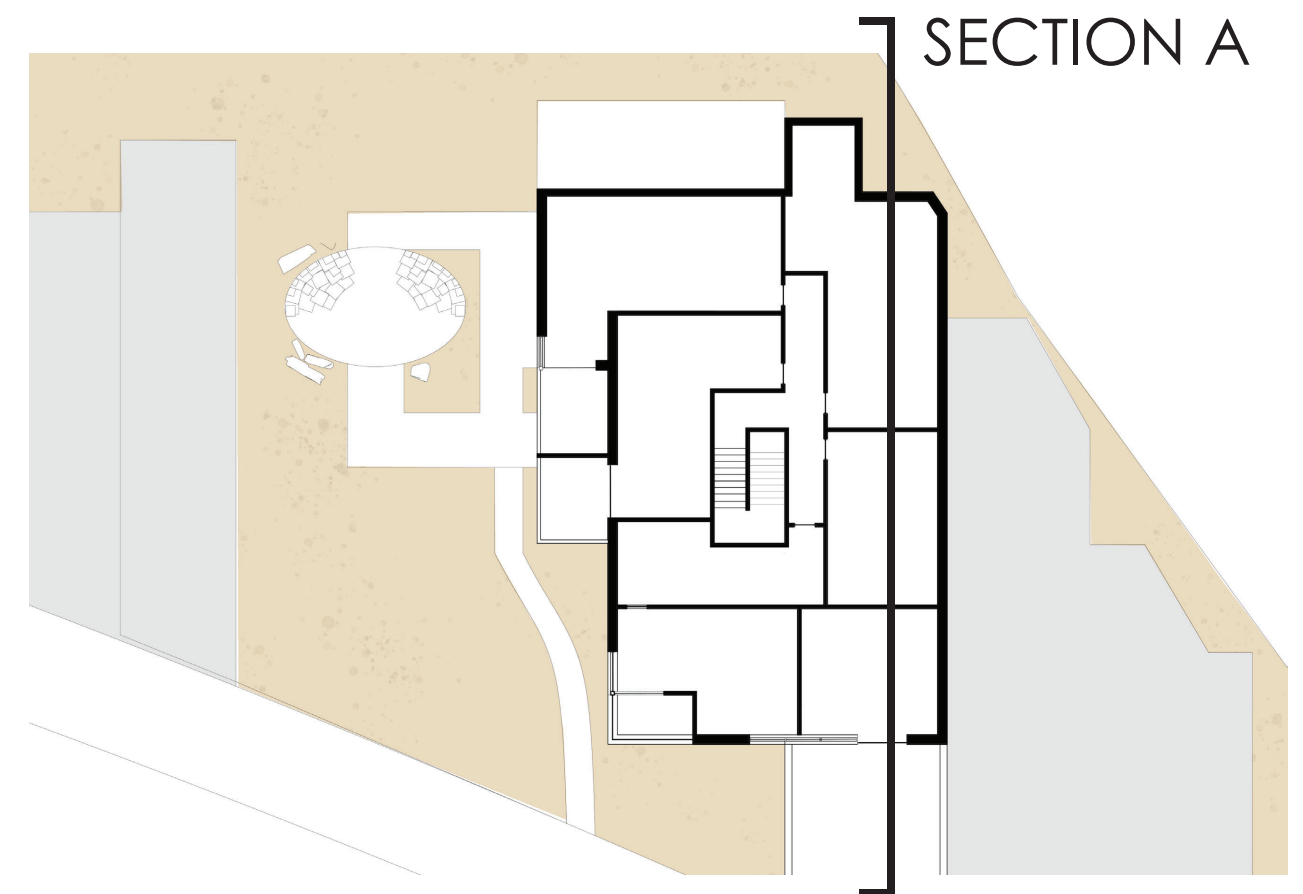
PROJECT FEATURES

The five dwelling units of the cooperative are located on the second floor over the publicly accessible work area. The final design is built around a small existing, one-story commercial building. The shared kitchen and workspaces are on the lower level. A key part of the workspace is the large, professional kiln that serves the North

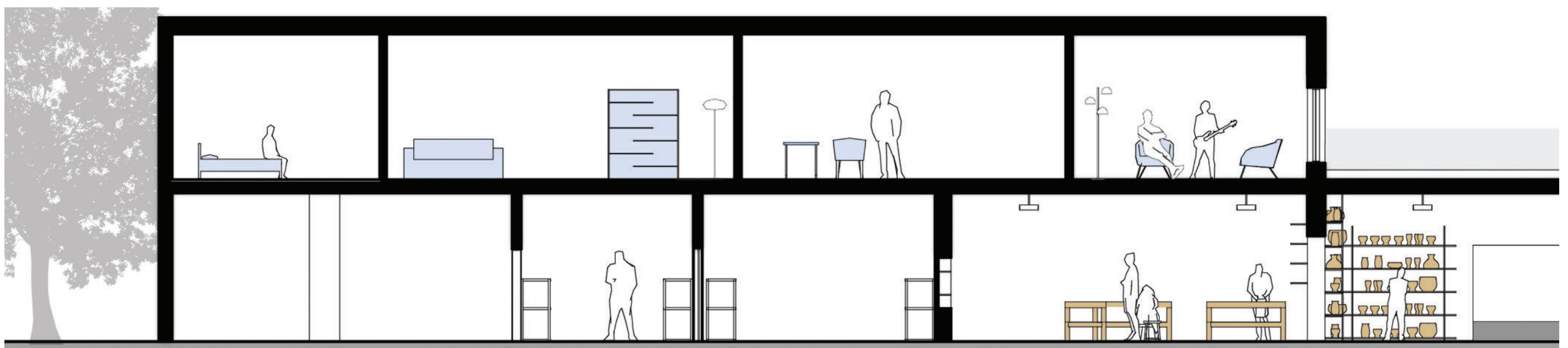
Minneapolis community in addition to the resident artists and students, thus accessible to the more public area. In addition to instructional spaces with pottery wheels and other pottery-making equipment, there is studio workspace, pottery storage area and a sales gallery.



VIEW OF NEW BUILD CONNECTING TO THE EXISTING BUILDING



SITE PLAN: PROGRAM ORGANIZATION



SECTION A: COMMERCIAL GROUND FLOOR WORKSHOP AND PRIVATE SECOND FLOOR LIVING SPACE



INTERIOR RENDERING OF THE RETAIL STORE



INTERIOR RENDERING OF THE POTTERY STUDIO



EXTERIOR RENDERING OF BUILDING FORM + FINISH MATERIAL, ALONG WITH THE ADJACENT COURTYARD